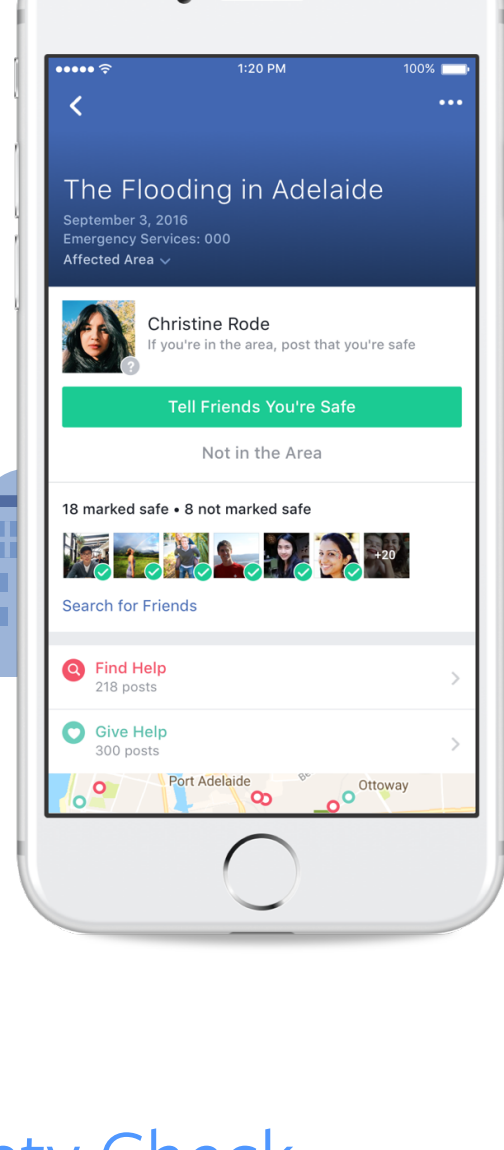


What is Safety Check?

Safety Check is an easy way for people to connect with friends and family during a crisis. When a lot of people post about an incident from the affected area, they may be invited to mark themselves safe through Safety Check.



Why We Built Safety Check

Nothing matters more to people than their safety. Because of our global scale - and because Facebook is a place where people naturally gather - we feel a responsibility as a company to make it easier for people to say they are safe and stay safe.

When a disaster happens, people turn to Facebook to check on loved ones and get updates. Communication - both for people in the affected area and their friends and family outside the area - is critical in these moments. We built Safety Check to make it easy for people to connect with friends and family when it matters most.

The 2011 earthquake and tsunami in Japan was devastating. According to the **Japanese Red Cross**, more than 12.5 million people were affected nationwide, and more than 400,000 people were evacuated. During that crisis we saw how people used social media to stay connected with people they cared about. Our engineers in Japan took the first step toward improving communication during a disaster by building a message board. They launched a test of this message board a year later as the response was overwhelmingly positive. This project later evolved into Safety Check and was launched globally in 2014.

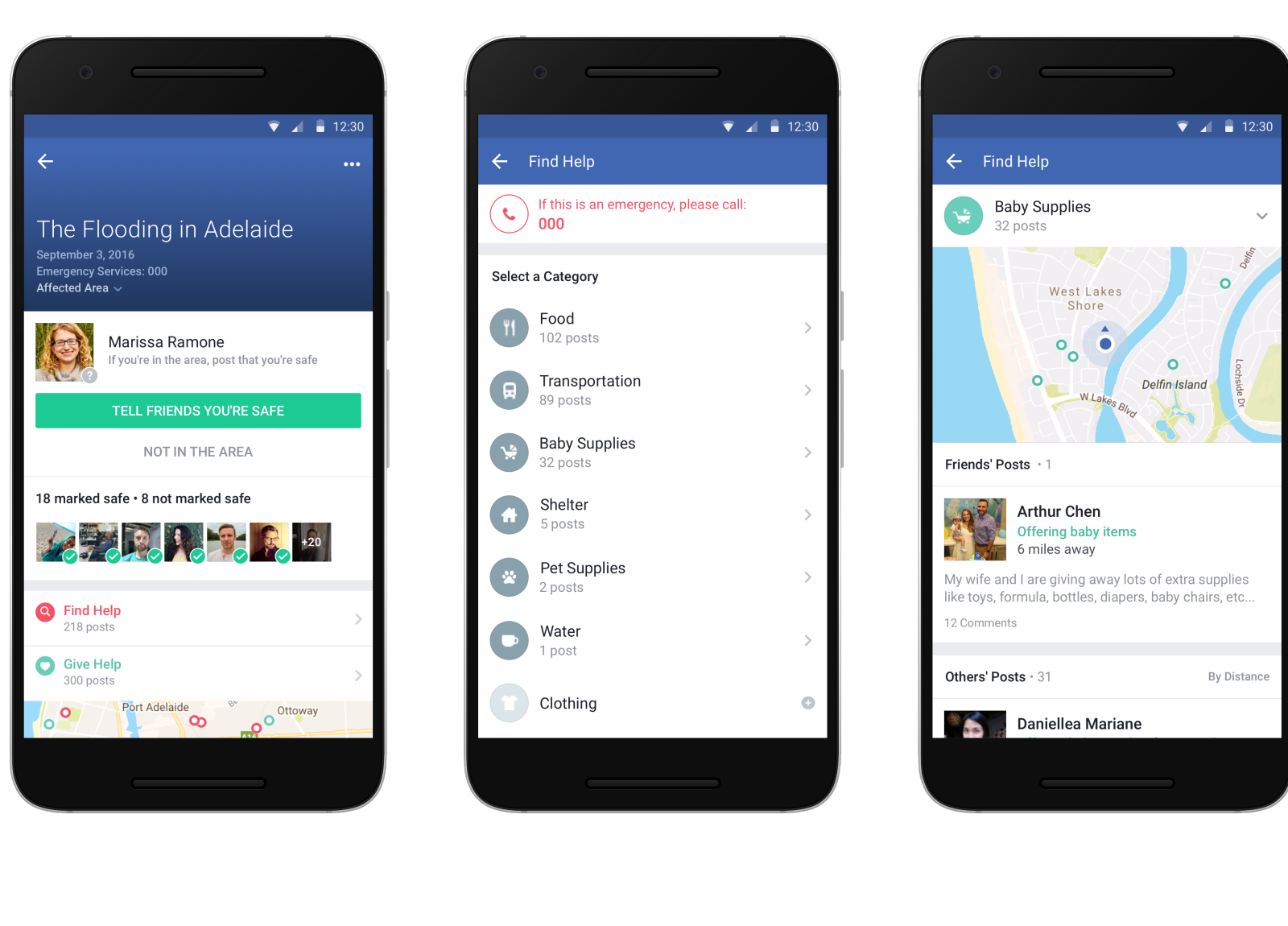
How It Works

We believe that the people closest to a disaster can best decide when Safety Check is most helpful. Now, instead of Facebook deciding when to activate, Safety Check is activated by the community. Here's how:



Help From the Community

We want to empower the community to help one another in times of crisis. Now, people can ask for and offer the help they need to recover, such as food, shelter and transportation, from within Safety Check. Posts can be viewed by category and location, making it easier for people to find the help they need. To start, we will make this feature available for natural disasters and accidental crises like building collapses and building fires.



By the Numbers

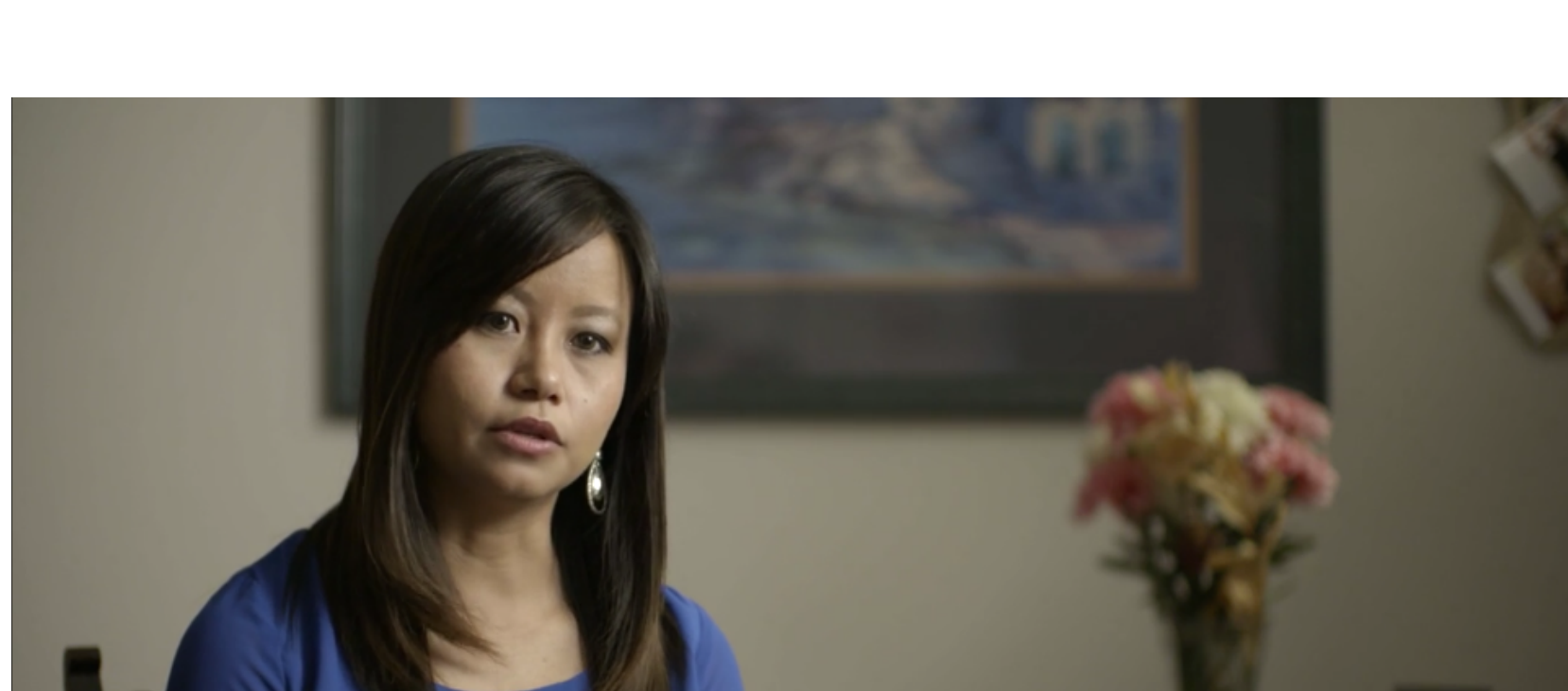
1,000,000
People reached by Safety Check following a disaster

- ✓ The community has **activated Safety Check hundreds of times** since June 2016.
- ✓ In 2016, **over 3M people** were marked safe after the earthquake in Ecuador, and **over 85M people** were notified that a friend was safe.
- ✓ After the earthquakes in Nepal in April and May 2015, **8.5M people** were marked safe and **150M people** were notified that a friend was safe.



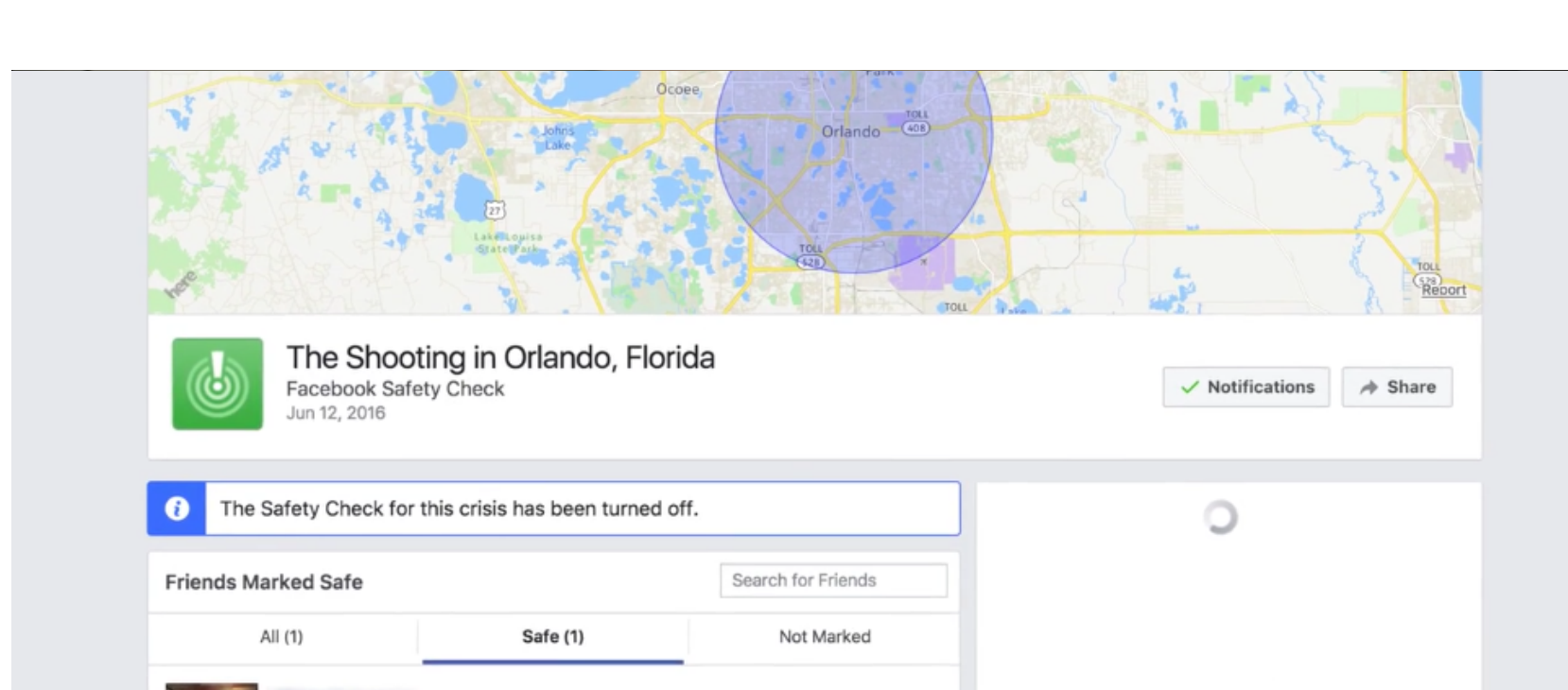
Stories from Safety Check Users

We hear stories from people on Facebook who were able to get in touch with loved ones through Safety Check, and it continues to inspire the work that we do.



Nepal Earthquakes, April 2015

Sabina's entire family was in Nepal when the earthquakes hit last April. Living in Oklahoma made it hard for her to find her family, since all of their phone lines were down. She found out most of her family was safe from a Facebook post, but couldn't reach her younger brother who was at work. Eventually he marked himself safe through Safety Check and she received a notification. This simple notification gave her incredible relief and a sense of peace even though she was thousands of miles away.



Orlando Nightclub Shooting, June 2016

Alex Wall lives in Brooklyn and learned about the Orlando shooting when a friend marked himself safe with Safety Check. Alex had recently lived in Orlando and was good friends with many of the people who'd been at the Pulse nightclub the evening of the shooting. Alex used Safety Check and Facebook to locate her friends, and to identify which friends were still unaccounted for. Alex said Safety Check gave her a sense of relief every time one more person checked in as safe.